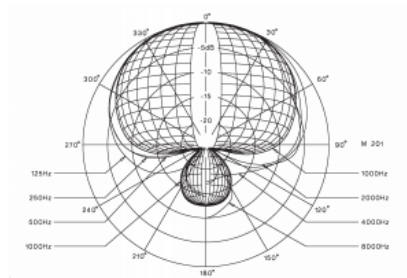
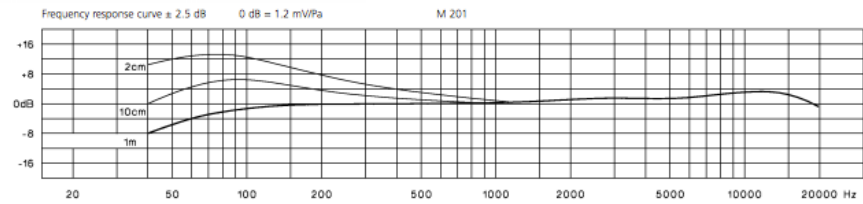
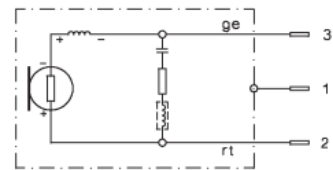


Beyerdynamic m 201



WIRING DIAGRAM

M 201



Type: Dynamic

Roll off: No

Polar Patterns: Hyper cardioid

Phantom Power: No

Max SPL: N/A

Applications: Vocals,
Snare, Hat, Guitar, Banjo

Frequency Range: 40 Hz - 18kHz

PAD: No